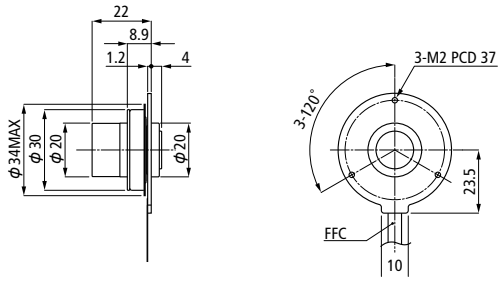


■ BN34 Series (Outer Rotor) *Dynamic Pressure Bearing equipped.



MODEL	Rated Voltage	No Load Speed	No Load Current	Torque Constant	Winding Resistance
	V	r/min	mA	mN·m/A(gf·cm/A)	Ω
BN34	12	16500	140	4.9 (50)	4.5