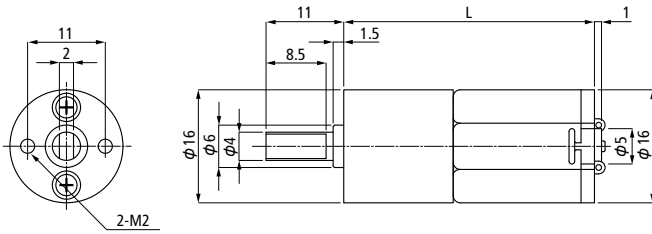


## ■ DN16 + Gear Head (Spur Gear)



MODEL(Gear Ratio)	Rated Voltage	Rated Torque	Rated Speed	Rated Current	No Load Speed	No Load Current	Total Length
	V	mN · m(gf · cm)	r/min	mA	r/min	mA	mm
DG16 M (1/ 34)	12	19.6 (200)	360	180	460	60	35.5
DG16 M (1/ 53)	12	29.4 (300)	235	180	300	60	35.5
DG16 M (1/ 97)	12	49.0 (500)	130	170	160	65	37.0
DG16 M (1/150)	12	49.0 (500)	95	130	105	65	37.0
DG16 L (1/ 34)	12	49.0 (500)	320	310	390	60	47.4
	24	49.0 (500)	330	165	400	30	47.4
DG16 L (1/ 53)	12	49.0 (500)	225	200	250	60	47.4
	24	49.0 (500)	235	110	260	30	47.4
DG16 L (1/ 97)	12	49.0 (500)	130	140	135	60	48.9
	24	49.0 (500)	135	80	145	30	48.9
DG16 L (1/150)	12	49.0 (500)	85	110	90	60	48.9
	24	49.0 (500)	90	60	95	30	48.9

DG16 : DN16+Gear Head