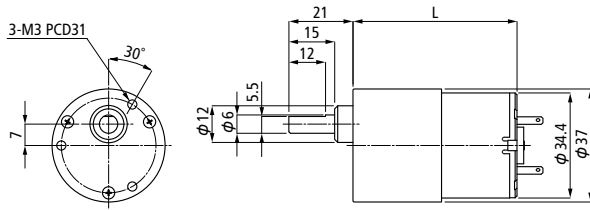


## ■ DN35 + Gear Head (Spur Gear)



MODEL(Gear Ratio)	Rated Voltage		Rated Torque		Rated Speed		Rated Current		No Load Speed		No Load Current		Total Length
	V		mN·m (gf·cm)		r/min		mA		r/min		mA		mm
DG35 M (1/ 30)	12		78.5 (800)		200		320		225		100		53.7
	24		78.5 (800)		180		160		210		50		53.7
DG35 M (1/ 60)	12		147.0 (1500)		100		325		110		100		56.2
	24		147.0 (1500)		90		160		110		50		56.2
DG35 M (1/ 100)	12		245.0 (2500)		60		325		70		100		56.2
	24		245.0 (2500)		52		170		62		50		56.2
DG35 M (1/ 150)	12		343.0 (3500)		40		325		45		100		58.7
	24		343.0 (3500)		37		130		42		50		58.7
DG35 M (1/ 300)	12		588.0 (6000)		20		300		23		100		58.7
	24		588.0 (6000)		19		130		22		50		58.7
DG35 M (1/ 500)	12		588.0 (6000)		12		230		14		100		61.2
	24		588.0 (6000)		12		120		13		50		61.2
DG35 L (1/ 30)	12		147.0 (1500)		185		500		215		100		60.3
	24		147.0 (1500)		185		265		210		60		60.3
DG35 L (1/ 60)	12		294.0 (3000)		90		540		110		100		62.8
	24		294.0 (3000)		90		270		105		60		62.8
DG35 L (1/ 100)	12		441.0 (4500)		55		500		65		100		62.8
	24		441.0 (4500)		55		260		62		60		62.8
DG35 L (1/ 150)	12		588.0 (6000)		37		490		45		100		65.3
	24		588.0 (6000)		36		260		42		60		65.3
DG35 L (1/ 300)	12		588.0 (6000)		20		300		22		100		65.3
	24		588.0 (6000)		20		160		21		60		65.3
DG35 L (1/ 500)	12		588.0 (6000)		12		230		13		100		67.8
	24		588.0 (6000)		12		130		13		60		67.8

DG35 : DN35+Gear Head