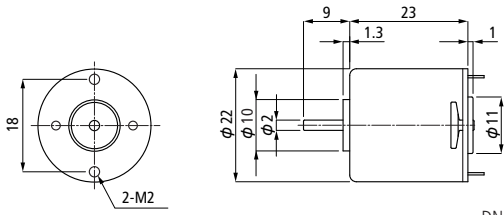
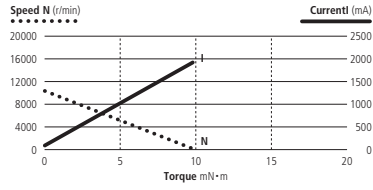


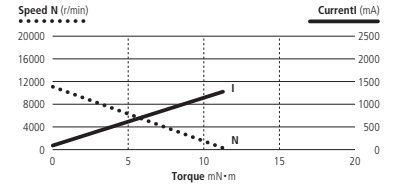
# DN22 Series



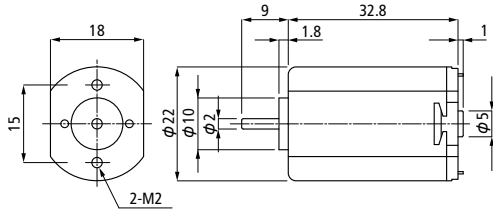
DN22 S



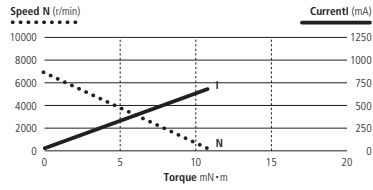
DN22 S 6V



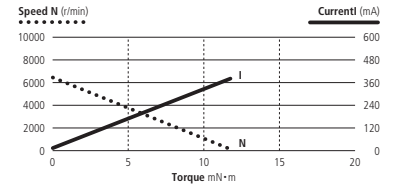
DN22 S 12V



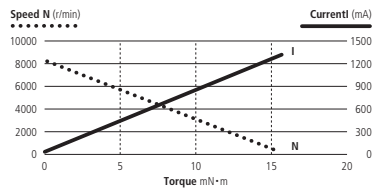
DN22



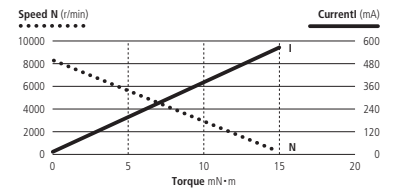
DN22 12V M-speed



DN22 24V M-speed



DN22 12V H-speed



DN22 24V H-speed

MODEL	Rated Voltage	Rated Power Output	Rated Torque	Rated Speed	Rated Current	No Load Speed	No Load Current	Starting Torque	Torque Constant	Winding Resistance	Winding Inductance	Moment of Inertia	Mechanical Time Constant	Thermal Resistance
	V	W	mN·m(gf·cm)	r/min	mA	r/min	mA	mN·m(gf·cm)	mN·m/A(gf·cm/A)	Ω	mH	g·cm <sup>2</sup>	ms	°C/W
DN22 S	6	2.0	2.45 (25)	7900	550	10500	80	9.8 (100)	5.2 (53)	3.0	1.3	1.6	17.8	45
	12	2.2	2.45 (25)	8600	340	11000	85	11.3 (115)	9.6 (98)	9.4	4.4	1.6	16.3	45
DN22 M-speed	12	1.3	2.45 (25)	5200	190	6800	35	10.8 (110)	15.7 (160)	16.4	7.6	3.7	25.0	42
	24	1.4	2.45 (25)	5300	100	6600	20	11.8 (120)	31.1 (317)	60.9	28.4	3.7	23.0	42
DN22 H-speed	12	1.8	2.45 (25)	7000	230	8200	45	15.7 (160)	12.5 (127)	9.4	4.4	3.7	23.0	42
	24	1.8	2.45 (25)	7000	120	8300	25	15.2 (155)	25.2 (257)	38.2	21.0	3.7	22.0	42