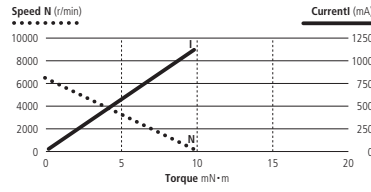
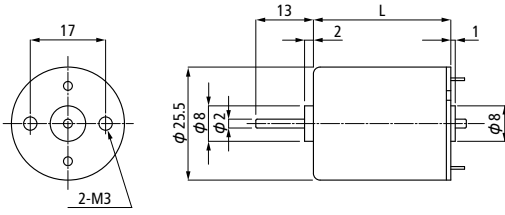
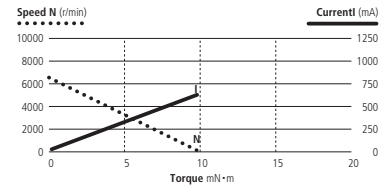


DN26 Series

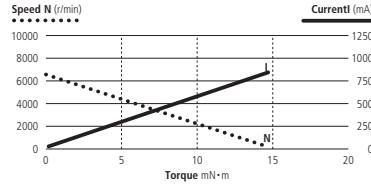


DN26 S 6V

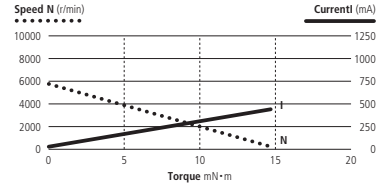


DN26 S 12V

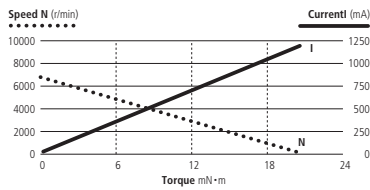
Type	L(mm)
S	25.5
M	31.0
L	36.5



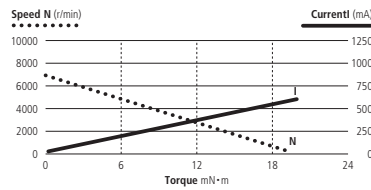
DN26 M 12V



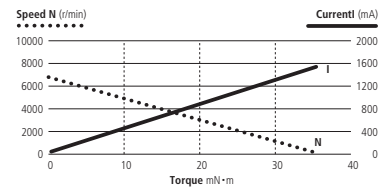
DN26 M 24V



DN26 L 12V



DN26 L 24V



DN26 L 22V High Power

MODEL	Rated Voltage	Rated Power Output	Rated Torque	Rated Speed	Rated Current	No Load Speed	No Load Current	Starting Torque	Torque Constant	Winding Resistance	Winding Inductance	Moment of Inertia	Mechanical Time Constant	Thermal Resistance
	V	W	mN·m(gf·cm)	r/min	mA	r/min	mA	mN·m(gf·cm)	mN·m/(gf·cm/A)	Ω	mH	g·cm ²	ms	°C/W
DN26 S	6	0.8	1.47 (15)	5450	220	6400	45	9.8 (100)	8.2 (84)	4.7	4.7	5.1	35.3	46
	12	0.9	1.47 (15)	5700	140	6600	45	9.8 (100)	15.3 (156)	16.6	16.5	5.1	36.2	46
DN26 M	12	2.1	4.90 (50)	4100	320	6150	30	14.7 (150)	16.7 (170)	13.0	12.2	8.7	40.7	40
	24	2.0	4.90 (50)	4000	170	5900	30	14.7 (150)	33.3 (340)	51.8	50.1	8.7	40.5	40
DN26 L	12	2.6	4.90 (50)	5000	340	6650	45	20.6 (210)	16.9 (172)	9.5	7.5	11.0	37.0	33
	24	2.6	4.90 (50)	5100	180	6900	25	19.6 (200)	31.4 (320)	38.2	31.0	11.0	43.0	33
DN26 L High Power	22	3.0	6.86 (70)	5400	360	6750	60	36.3 (370)	30.4 (310)	16.4	13.8	11.0	19.5	33