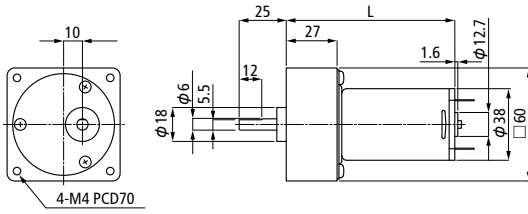


■ FN38 + Gear Head (Spur Gear)



MODEL(Gear Ratio)	Rated Voltage	Rated Torque	Rated Speed	Rated Current	No Load Speed	No Load Current	Total Length
	V	mN · m(gf · cm)	r/min	mA	r/min	mA	mm
FG38 S (1/12.5)	24	490 (5000)	288	1800	488	230	84.5
FG38 M (1/12.5)	24	490 (5000)	254	1800	504	230	89.5
FG38 L (1/12.5)	24	490 (5000)	335	1800	390	230	99.5

FG38 : FN38+Gear Head