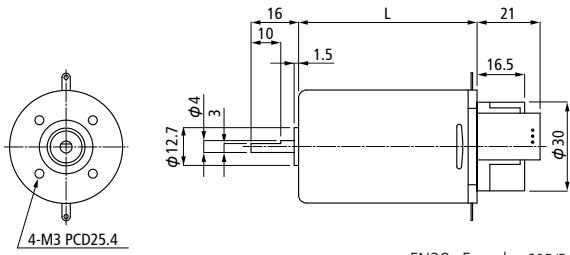
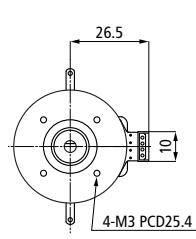


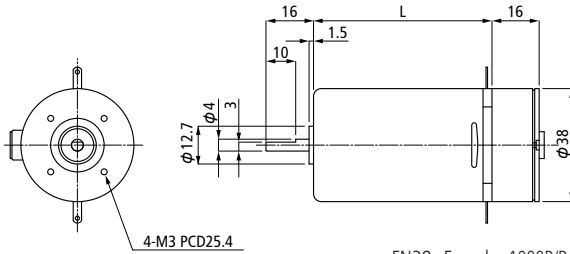
■ FN38 + Encoder



FN38+Encoder 60P/R



FN38+Encoder 200/512P/R



FN38+Encoder 1000P/R

MODEL(Phases)	Input Voltage	Number of Pulses	Response Frequency	Encoder Type	Output Level	Index Pulse Width	Logic Width	Duty Ratio	Output Signal Form
	V	P/R	KHz(MAX)						
FP38 (1)	5	60	20	Optical	TTL	---	---	30%~70%	Square Wave
FP38 (2)	5	200	20	Optical	TTL	---	S=90°e±10°e	35%~65%	Square Wave
FP38 (3)	5	512	40	Optical	TTL	---	S=90°e±30°e	30%~70%	Square Wave
FP38 (3)	5	1000	50	Optical	TTL	180°e×4	S=90°e±15°e	40%~60%	Square Wave

FP38 : FN38+Encoder