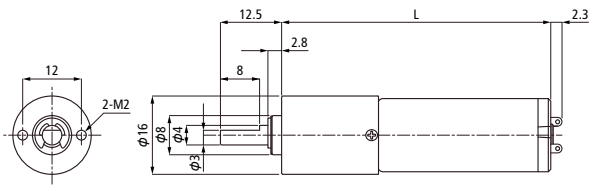


# ■ LN15 + Gear Head (Planetary Gear)



MODEL(Gear Ratio)	Rated Voltage	Rated Torque	Rated Speed	Rated Current	No Load Speed	No Load Current	Total Length
	V	mN·m(gf·cm)	r/min	mA	r/min	mA	mm
LG15 (1/ 20)	12	19.6 (200)	550	180	580	50	51.3
LG15 (1/ 62)	12	49.1 (500)	180	180	190	55	55.0
LG15 (1/ 107)	12	98.1 (1000)	103	200	109	55	55.0
LG15 (1/ 242)	12	147.0 (1500)	46	170	48	60	58.7
LG15 (1/ 410)	12	196.0 (2000)	28	150	29	60	58.7

LG15 : LN15+Gear Head